

飛

鴻

堂

瓶

譜

均之發而為言也曷為分別乎好
之與莠良以慎之又慎是為植福
之基出是何傷即為賈禍之藪若
夫瓶之為物也虛其腹斂其口巖
然而上列也既能自卷其尊窳狀
而不譁也復能自堅其守秀峰汪

君唯恐興戎括囊无咎譜為是圖
以質英敏之賢使高談雄辯者亦
欲守口如餅而為笑言之不苟
乾隆十五年歲在上章敲牂隄
月元夕浙東魏三湘敬題

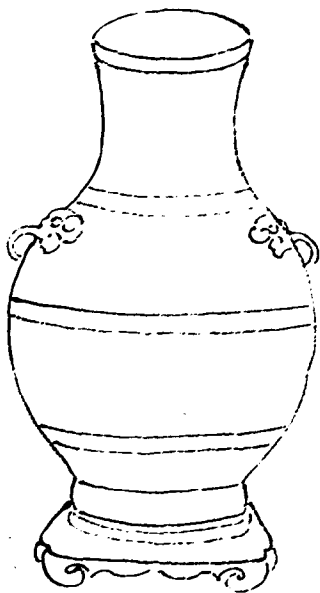


飛鴻堂瓶譜

古歙汪啟淑秀峰氏鑒藏



飛鴻堂瓶譜



高一尺三寸花梨座



高五寸



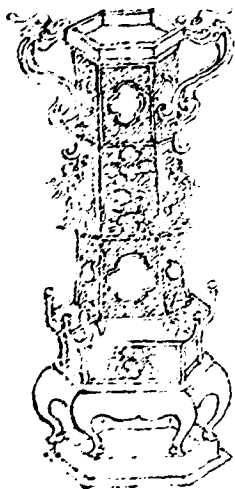
高九寸一分紫檀座



高一尺零五分紫檀座



高二尺零六分紫檀座

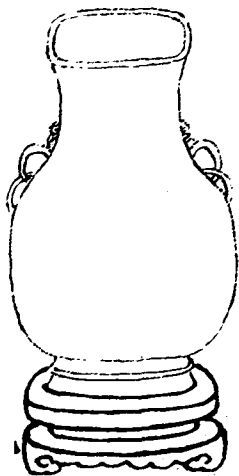


列位先生

高六寸六分



高四寸二分紫檀座



高三寸紫檀座

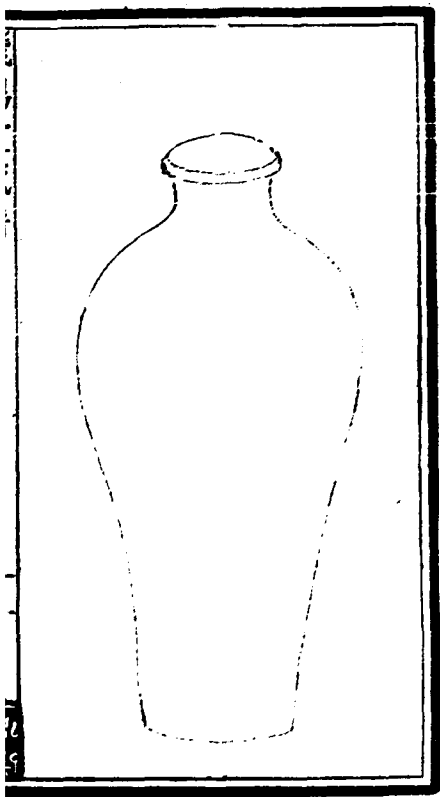
飛鶴堂瓶譜



高四寸二分花梨座

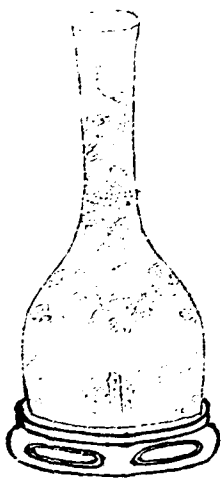


高一尺四寸二分花梨座



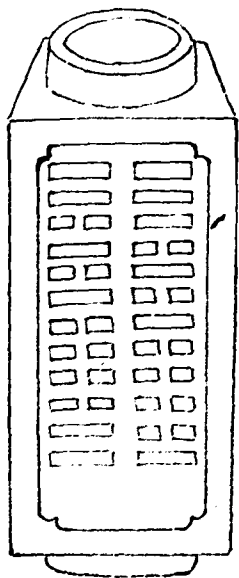
飛鴻堂畫譜

高七寸四分



高五寸三分紫檀座

飛鴻堂瓶譜



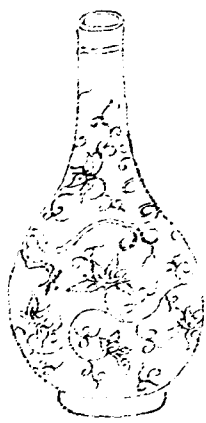
高七寸二分

飛鴻堂瓶譜

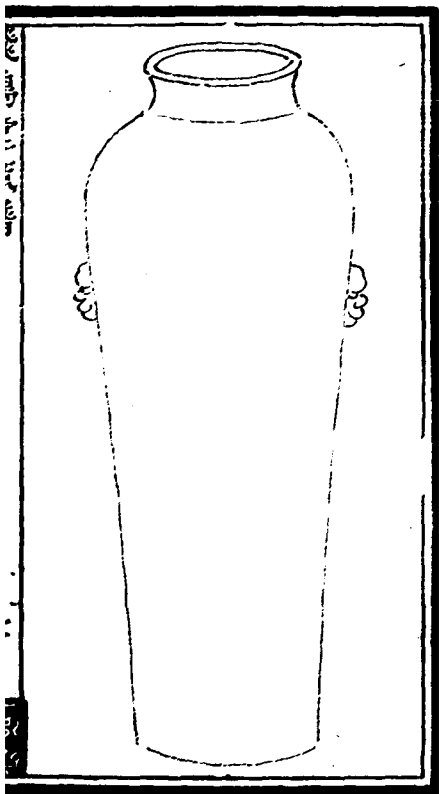


高七寸三分

卷之三



三



高一尺零六分



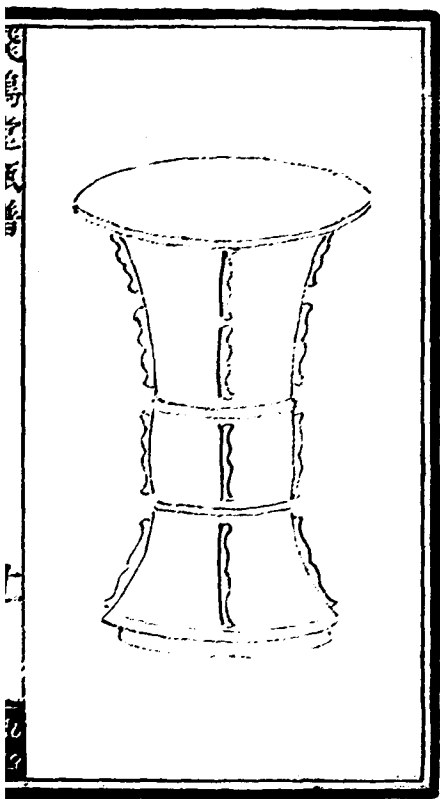
高五寸



高三寸三分烏木座



高五寸八分



高五寸九分



子法宜辨言

高四寸四分

十一

子法

飛鴻堂瓶譜



高三寸三分



高七寸二分紫檀座

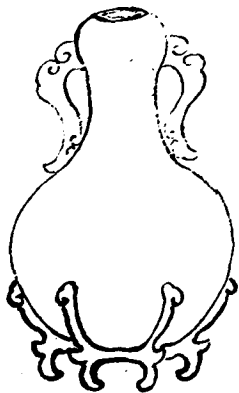


高五寸



高二寸六分花梨座

卷之三十一

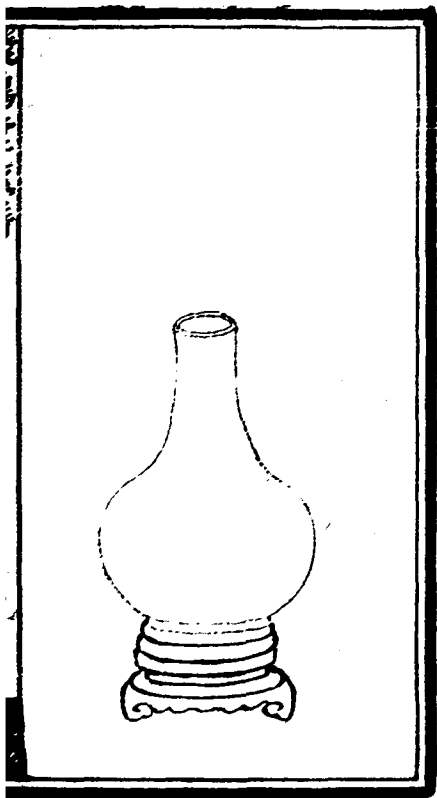


十一

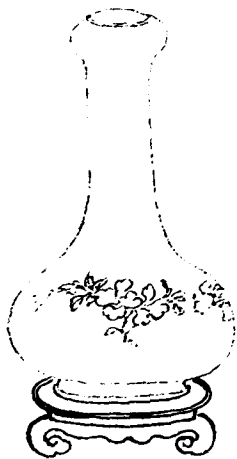
高六寸一分紫檀座



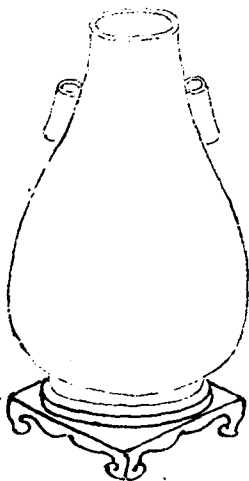
高四寸五分紫檀座



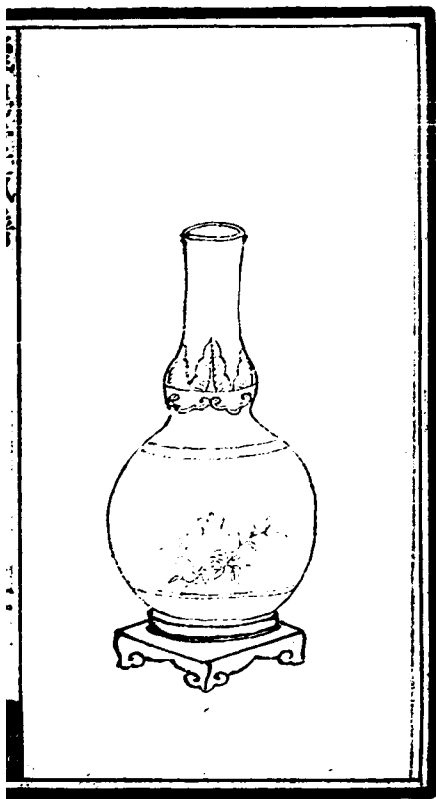
高五寸六分紫檀座



高二寸九分紫檀座

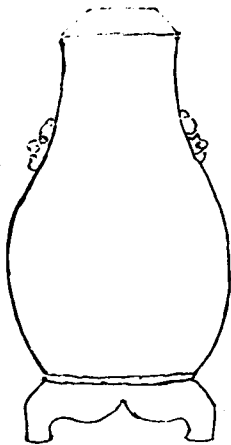


高三寸六分紫檀座



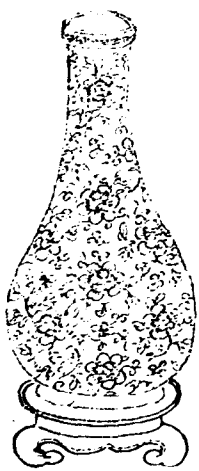
高九寸七分花梨座

Figure 1. A simple line drawing of a vase or jar, showing its overall shape and decorative elements. The drawing is enclosed in a rectangular border.



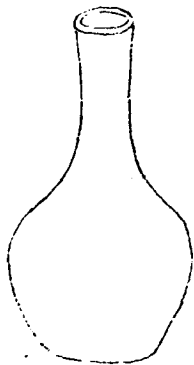
高二寸二分紫檀座

200
The Shell and the Stone



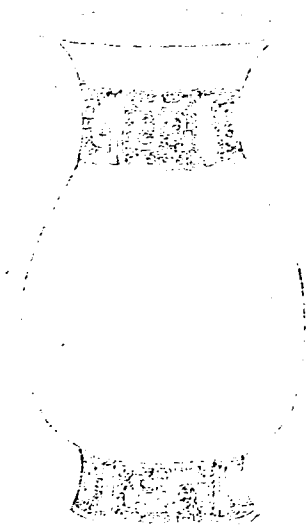
升平堂雜記

高九寸五分花梨座



高四寸五分

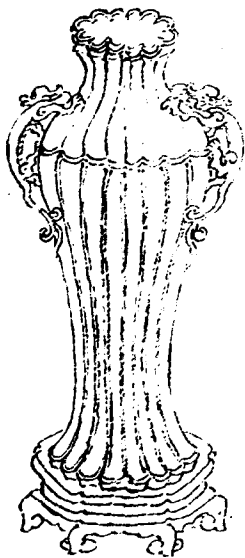
飛
鴻
堂
瓶
譜



高三寸八分紫檀座

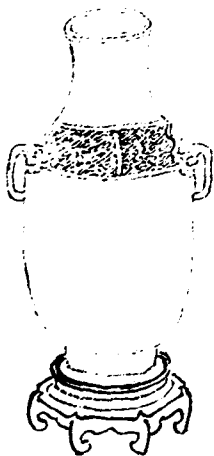


高三寸六分紫檀座

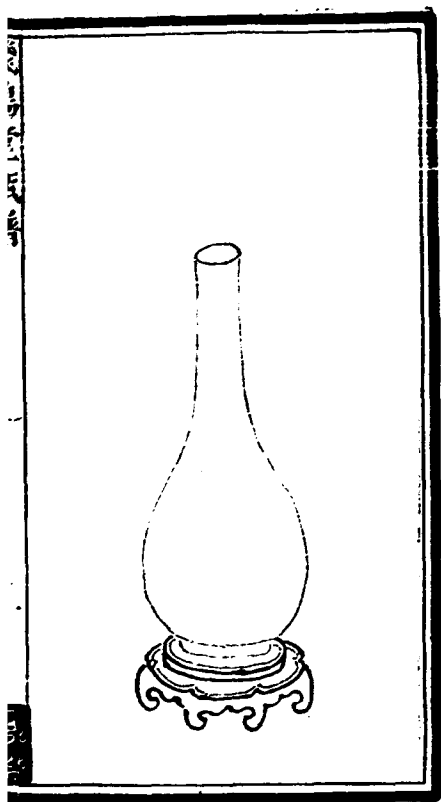


高一尺零七分花梨座

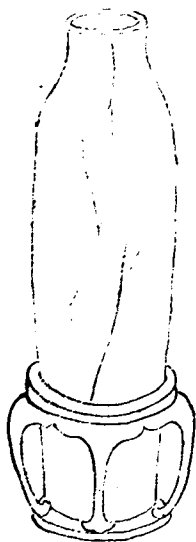
飛鴻堂瓶譜



高四寸紫檀座



高七寸紫檀座

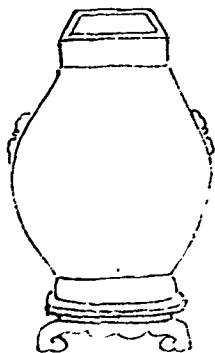


高六寸一分花梨座

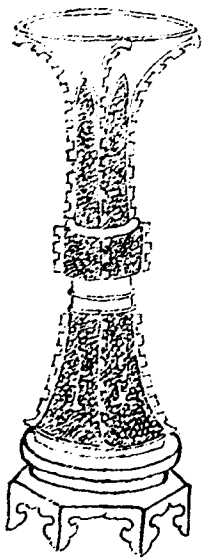
飛鳥堂瓶譜



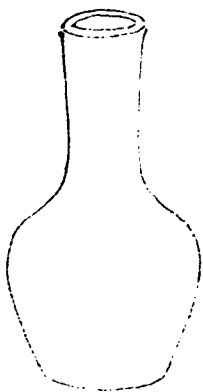
高五寸五分黃楊座



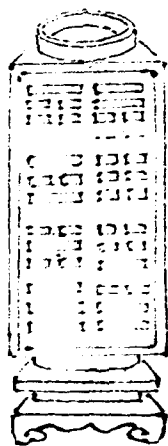
高二寸二分紫檀座



高七寸九分花梨座

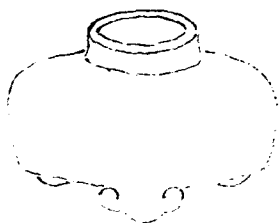


高三寸三分



高八寸四分花梨座

320 100 100 100 100

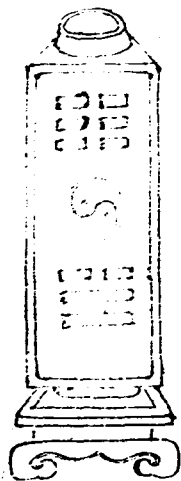


100

100

高一寸六分

飛鴻堂瓶譜



高四寸一分楠木座

Figure 1. A line drawing of a vase with a neck and a body.

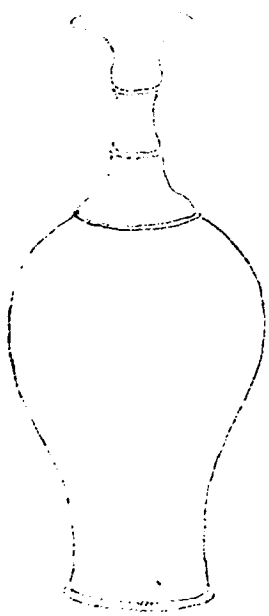


Figure 2. A line drawing of a vase with a neck and a body.

Figure 3. A line drawing of a vase with a neck and a body.

并無室辨言

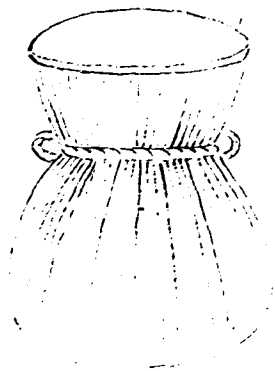
高四寸一分

五六

七



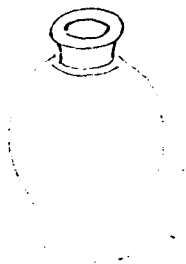
高七寸四分花梨座



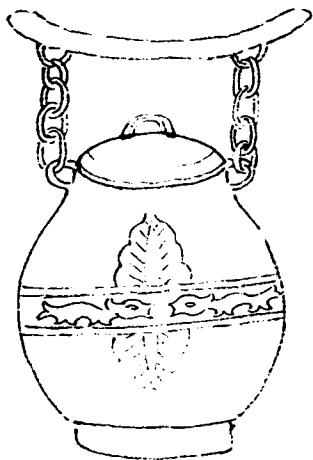
齊東野語

高二寸六分

五十一



高一寸八分



高二寸三分

Figure 1

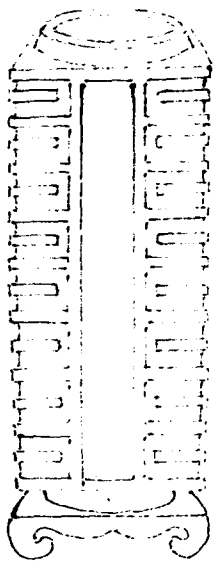


1

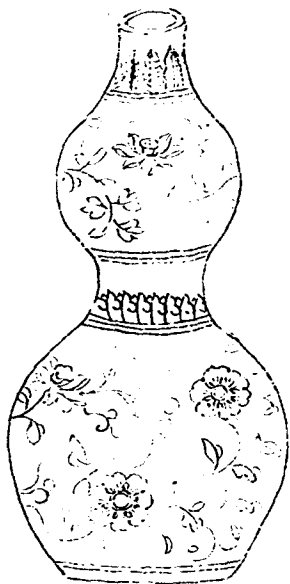
升源堂并記

高二寸六分

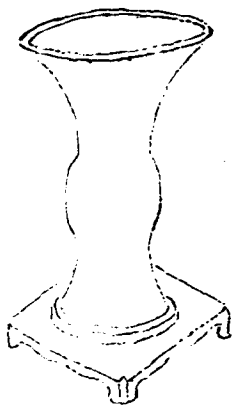
五十六



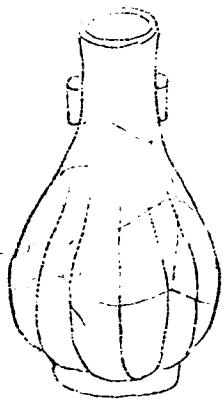
高五寸五分花梨座



高六寸五分



高二寸三分楠木座

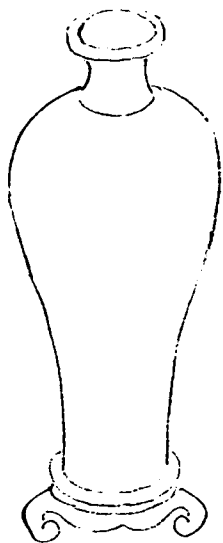


升湘堂辨言

高二寸七分

五

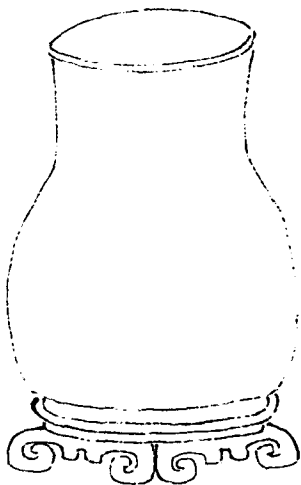
卷



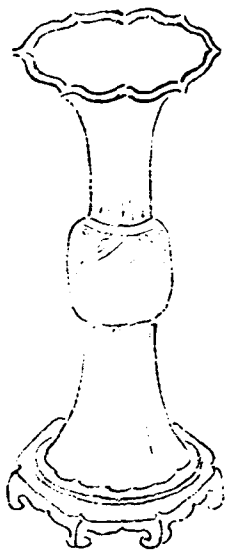
高五寸二分花梨座



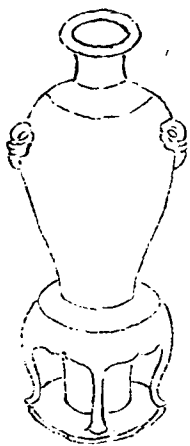
高二寸一分花梨座



高三寸二分紫檀座



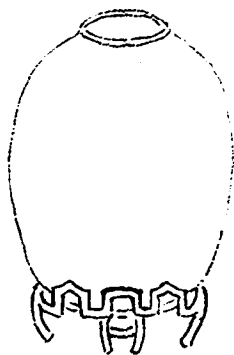
高六寸花梨座



高三寸四分銅座

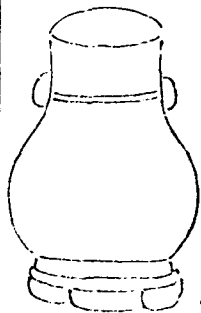


高一寸九分



高二寸三分紫檀座

高一寸九分紫檀座



飛鴻堂瓶譜終

飛鴻堂瓶譜